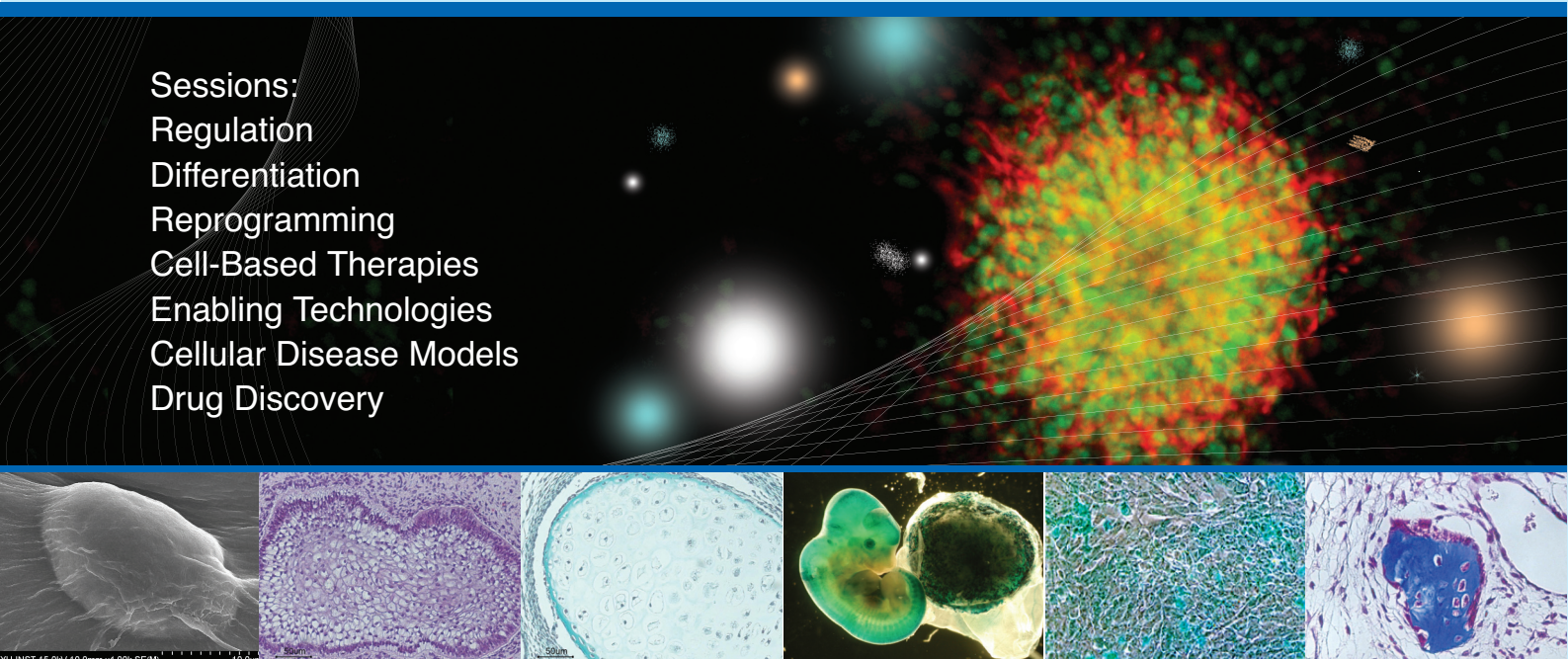


Institut Pasteur Korea and CHA Stem Cell Institute Present:

The 3rd International Collaborative Symposium on Stem Cell Research

Sessions:
Regulation
Differentiation
Reprogramming
Cell-Based Therapies
Enabling Technologies
Cellular Disease Models
Drug Discovery



April 29-30, 2011

JW Marriott Hotel, Seoul, Korea

Hosted by



Institut Pasteur Korea

CHA

Stem Cell Institute

중 · 기 · 세 · 포 · 지 · 표 · 연 · 구 · 선 · 더

Sponsored by



Global Inspiration

GyeongGi-Do

APBRF

아시아태평양생명과학연구재단
Asia-Pacific Biomedical Research Foundation

CHA RIS (주) 차알아이에스

Message from President

Welcoming Remarks from Dr. Kwang-Soo Kim

Director of CHA Stem Cell Institute

- Professor, Harvard Medical School/McLean Hospital, 2005-present
- Ph.D., Korea Advanced Institute of Science and Technology (KAIST), 1983
- M.S., Korea Advanced Institute of Science and Technology (KAIST), 1979
- B.S., Seoul National University, 1977



On behalf of CHA Stem Cell Institute(CSCI), I would like to extend our invitation to participate in the 3rd International Collaborative Symposium on Stem Cell Research to be held in Seoul, Korea from April 29-30, 2011.

Needless to say, stem cell research has become an essential part of life science and biomedical research mainstream. As such, recent advances in stem cell research using embryonic and adult stem cells are not only providing invaluable platforms for biological research but also offer critical therapeutic avenues for many intractable human diseases. In addition, recent ground-breaking studies demonstrated that patient- and disease-specific pluripotent stem cells can be generated by introducing several transcription factors, widely opening the era of “personalized medicine”, further igniting interests from scientific as well as non-scientific communities. Indeed, these diverse stem cell approaches will definitely make it possible to achieve paradigm-shift approaches to study and treat numerous human diseases in the near future.

To accelerate the field's progress under a strategically focused and efficient effort, we are committed to promoting and fostering collaborative research among scientists worldwide. It is with this spirit and vision of collaborative research that CSCI and Institut Pasteur Korea are co-hosting the 3rd International Collaborative Symposium on Stem Cell Research.

It is with much excitement that I would like to point out that internationally renowned stem cell research leaders will participate in this conference. I have no doubt the meeting will provide all participants with a unique opportunity to share and exchange their recent exciting findings, leading to the initiation of novel and fruitful international collaborations.

It is our sincere wish and belief that this year's symposium will provide another milestone in the field of stem cell biology. It would be our privilege if you would honor us with your presence and share in our vision. I look forward to seeing you in Seoul this coming April.

Message from President

Welcoming Remarks from Dr. Natalie DeWitt

Director of Institut Pasteur Korea

- Director of Scientific Affairs, IP-K, 2010-Present
- Senior Editor, Nature, 2001-2010
- Research Editor, Nature Biotechnology, 1999-2001
- Postdoctoral Fellow, Yale University, 1995-1999
- Ph.D., University of Wisconsin, Madison, 1994

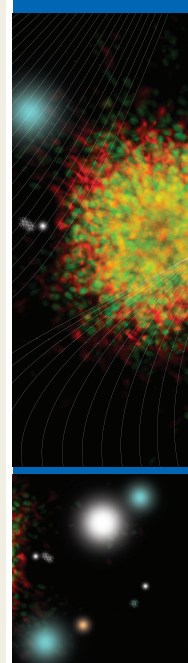


The 3rd International Collaborative Symposium on Stem Cell Research marks a crucial crossroads of drug discovery and stem cell research. In 2008, the first patient-specific stem cell lines were announced. Today there are pluripotent human stem cell lines from dozens of individuals healthy or suffering from incurable chronic diseases.

At the same time, the need for new drugs have become ever more pressing, as the pharmaceutical pipelines become increasingly bare.

IP-K has integrated genomics, imaging, bioinformatics, and robotics to create a new model of drug discovery, where we can screen genes and compounds for their impact on cell-based disease models. Our goal in partnering with Cha Stem Cell Institute to host this symposium is to unite drug discovery with stem cell research to explore ways of using stem cell technology to study disease mechanisms, and to create cell-based models for development of therapeutics and studies of cell toxicity.

We are bringing together leading scientists from Europe, North America, Japan, Singapore, China and Korea to exchange ideas and forge new alliances. IP-K welcomes your participation, and hope you will bring with you a spirit of curiosity, collaboration, and dedication to the cause of using stem cell research to ease human suffering.



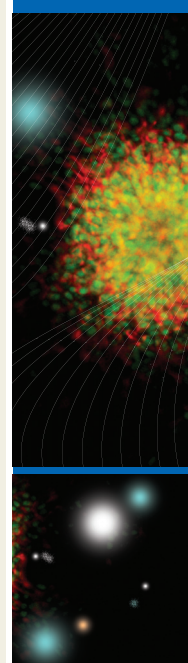
Time Table

Time	April 29, Friday	Time	April 30, Saturday
8:00-8:40	Registration	8:00-9:00	Registration
8:40-9:00	Opening		
9:00-11:00	Session 1. Regulation Ying Jin (China) Kyung-Sun Kang (Korea) Seong-Jin Kim (Korea) Victoria V. Lunyak (U.S.A.)	9:00-11:00	Session 5. Enabling Technologies Michael F. Clarke (U.S.A.) Jin-Soo Kim (Korea) KiBum Lee (U.S.A.) Huck-Hui Ng (Singapore)
11:00-11:10	Coffee Break	11:00-11:10	Coffee Break
11:10-13:10	Session 2. Differentiation Takayuki Asahara (Japan) Shin-Ichi Nishikawa (RIKEN, Japan) Hideyuki Okano (Japan) David Warburton (U.S.A.)	11:10-13:10	Session 6. Cellular Disease Models Juan Carlos Izpisua Belmonte (U.S.A.) Kenneth R. Chien (U.S.A.) Dong-Wook Kim (Korea) Ihor R. Lemischka (U.S.A.)
13:10-14:40	Lunch (Poster Session)	13:10-14:40	Lunch (Poster Session)
14:40-16:10	Session 3. Reprogramming Kwang-Soo Kim (U.S.A.) Hans R. Schöler (Germany) Marius Wernig (U.S.A.)	14:40-16:40	Session 7. Drug Discovery Sheng Ding (U.S.A.) Thierry Dorval (Korea) Jeanne F. Loring (U.S.A.) Christine Mummery (The Netherlands)
16:10-16:20	Coffee Break		
16:20-17:50	Session 4. Cell-Based Therapies Hal E. Broxmeyer (U.S.A.) Robert Lanza (U.S.A.) Johannes Schwarz (Germany)	16:40-16:50	Coffee Break
		16:50-17:10	Poster Awards
		17:10-17:20	Closing

Daily Program

April 29, Friday

- 8:00-8:40 Registration
- 8:40-9:00 Opening
- 9:00-11:00 **Session 1. Regulation**
Ying Jin (Shanghai JiaoTong University, China)
An Early Differentiation Switching Signaling Circuitry in Mouse Embryonic Stem Cells and Embryogenesis
Kyung-Sun Kang (Seoul National University, Korea)
Histone Deacetylase Regulates High Mobility Group A2-Targeting Micrnas in Adult Stem Cell Aging
Seong-Jin Kim (CHA University, Korea)
TGF- β -Induced Epithelial-Mesenchymal Transition and Acquisition of Stemness in Human Cancer
Victoria V. Lunyak (Buck Institute for Age Research, U.S.A.)
Mesenchymal Stem Cells - New Age of Stromal Cells
- 11:00-11:10 Coffee Break
- 11:10-13:10 **Session 2. Differentiation**
Takayuki Asahara (Tokai University, Japan)
Endothelial Progenitor Cells for Organogenesis
Shin-Ichi Nishikawa (RIKEN, Japan)
Development of Hematopoietic Stem Cells Explained
Hideyuki Okano (Keio University, Japan)
Strategies toward Regeneration of Damaged CNS Using iPS Cells
David Warburton (University of Southern California, U.S.A.)
Novel Approaches to Stem Cell Based Therapies of Kidney, Lung and Gut Disease
- 13:10-14:40 Lunch (Poster Session)
- 14:40-16:10 **Session 3. Reprogramming**
Kwang-Soo Kim (Harvard Medical School, U.S.A.)
Protein-Based Reprogramming for Personalized Medicine
Hans R. Schöler (Max Planck Institute for Molecular Biomedicine, Germany)
Induction of Pluripotency in Germline and Somatic Cells
Marius Wernig (Stanford University, U.S.A.)
Direct Conversion of Fibroblasts to Functional Neurons by Defined Factors
- 16:10-16:20 Coffee Break
- 16:20-17:50 **Session 4. Cell-Based Therapies**
Hal E. Broxmeyer (Indiana University, U.S.A.)
Induction of Pluripotency in Germline and Somatic Cells
Robert Lanza (Advanced Cell Technology, Inc., U.S.A.)
The First Human Embryonic Stem Cell Trials
Johannes Schwarz (University of Leipzig, Germany)
Stable Expansion of Human Neural Progenitor Cells



April 30, Saturday

8:00-9:00 Registration

9:00-11:00 Session 5. Enabling Technologies

Michael F. Clarke (Stanford University, U.S.A.)

Clinical Implications of Regulators of Self Renewal in Cancer

Jin-Soo Kim (Seoul National University, Korea)

Genome Engineering in Human Cells via Zinc Finger Nucleases

KiBum Lee (The State University of New Jersey, U.S.A.)

Nanotechnology Approaches for Identifying Microenvironmental Cues Regulating Stem Cell Fate

Huck Hui Ng (National University of Singapore, Singapore)

The Molecular Basis for Pluripotency

11:00-11:10 Coffee Break

11:10-13:10 Session 6. Cellular Disease Models

Juan Carlos Izpisua Belmonte (Salk Institute for Biological Studies, U.S.A.)

Recapitulation of Human Premature Aging by Using iPSCs from Hutchinson-Gilford Progeria Syndrome

Kenneth R. Chien (Harvard Medical School, U.S.A.)

Driving Pluripotent Stem Cells towards a Ventriculogenic Fate: Epigenetic and Modified RNA Pathways

Dong-Wook Kim (Yonsei University, Korea)

Disease-Specific iPSCs as a Model of Neurological Disorder

Ihor R. Lemischka (Mount Sinai Medical Center, U.S.A.)

13:10-14:40 Lunch (Poster Session)

14:40-16:40 Session 7. Drug Discovery

Sheng Ding (University of California San Francisco, U.S.A.)

A Chemical Approach to Controlling Cell Fate

Thierry Dorval (Institut Pasteur Korea, Korea)

Screening Stem Cells

Jeanne F. Loring (The Scripps Research Institute, U.S.A.)

High Information-Content Molecular Profiling for Validating hESCs and iPSCs

Christine Mummery (Leiden University Medical Center, The Netherlands)

Cardiovascular Derivatives of Embryonic Stem Cells in Cardiac Repair and Drug Discovery

16:40-16:50 Coffee Break

16:50-17:10 Poster Awards

17:10-17:20 Closing

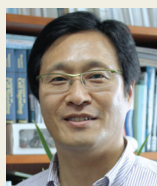
Guest Speakers

Session 1. Regulation



Ying Jin

Director
Shanghai JiaoTong University
China



Kyung-Sun Kang

Professor and Director
Seoul National University
Korea



Seong-Jin Kim

Professor
CHA University
Korea



Victoria V. Lunyak

Associate Professor
Buck Institute for Age Research
U.S.A.

Session 3. Reprogramming



Kwang-Soo Kim

Professor
Harvard Medical School
U.S.A.



Hans R. Schöler

Professor and Director
Max Planck Institute for
Molecular Biomedicine
Germany



Marius Wernig

Assistant Professor
Stanford University
U.S.A.

Session 2. Differentiation



Takayuki Asahara

Professor
Tokai University
Japan



Shin-Ichi Nishikawa

Group Director
RIKEN
Japan



Hideyuki Okano

Professor
Keio University
Japan



David Warburton

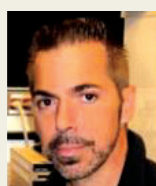
Professor and Director
University of Southern California
U.S.A.

Session 4. Cell-Based Therapies



Hal E. Broxmeyer

Distinguished Professor
Indiana University
U.S.A.



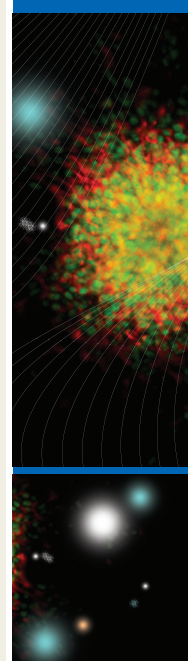
Robert Lanza

Chief Scientific Officer
Advanced Cell Technology, Inc.,
U.S.A.



Johannes Schwarz

Vice-Chairman
University of Leipzig
Germany



Session 5. Enabling Technologies



Michael F. Clarke

Professor
Stanford University
U.S.A.



Jin-Soo Kim

Associate Professor
Seoul National University
Korea



KiBum Lee

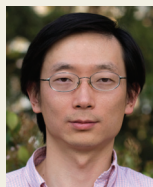
Assistant Professor
The State University of New Jersey
U.S.A.



Huck-Hui Ng

Professor and Senior Group Leader
National University of Singapore
Singapore

Session 7. Drug Discovery



Sheng Ding

Professor
University of California San Francisco
U.S.A.



Thierry Dorval

Team Leader
Institut Pasteur Korea
Korea



Jeanne F. Loring

Professor and Director
The Scripps Research Institute
U.S.A.



Christine Mummery

Professor
Leiden University Medical Center
The Netherlands

Session 6. Cellular Disease Models



Juan Carlos Izpisua Belmonte

Professor
Salk Institute for Biological Studies
U.S.A.



Kenneth R. Chien

Professor
Harvard Medical School
U.S.A.



Dong-Wook Kim

Professor
Yonsei University
Korea



Ihor R. Lemischka

Professor and Director
Mount Sinai Medical Center
U.S.A.



Poster Awards will be held
on April 30.
Join our poster session!

Call for Abstract

The 3rd International Collaborative Symposium on Stem Cell Research welcomes the submission of abstracts for poster presentation. You may register on-line or download the registration form and E-mail or Fax to Secretariat, Abstract Submission Due: March 25, 2011

The 3rd International Collaborative Symposium on Stem Cell Research April 29-30, 2011 JW Marriott, Seoul, Korea

Poster Presentation Topics (Please choose one from the topics below)

- | | |
|--|--|
| <input type="checkbox"/> 1. New concepts of stem cell research | <input type="checkbox"/> 5. iPS cell for cellular disease models |
| <input type="checkbox"/> 2. Regulation of stem cell function | <input type="checkbox"/> 6. Screening in stem cells |
| <input type="checkbox"/> 3. Stem cell differentiation | <input type="checkbox"/> 7. ES and iPS-based toxicity models |
| <input type="checkbox"/> 4. Stem cell replacement therapy | <input type="checkbox"/> 8. Future perspectives of stem cell application |

Abstract Form for Poster Presentation

TITLE (11point, TIMES NEW ROMAN, BOLD)

First Author¹, Other Author(s)² (11point, Times New Roman, Bold)

¹Department, Organization of first author, City, Country (10point, Times New Roman, Italic)

²Department, Organization of other author(s), City, Country (10point, Times New Roman, Italic)

The abstract is limited to maximum 300 characters (11point, Times New Roman)

Presenter Information	Name	
	Phone	(Office) (Mobile)
	E-mail	

* Submission Due: March 25, 2011

Registration

You may register on-line or download the registration form and E-mail or Fax to Secretariat.

- Pre-Registration Due : April 8, 2011
- Cancellation Due : April 15, 2011

The 3rd International Collaborative Symposium on Stem Cell Research April 29-30, 2011 JW Marriott, Seoul, Korea

Registration Form

Last Name		First Name	
Title	[] Prof. [] Dr. [] PhD. [] Researcher [] Graduate Student		
Affiliation			
Address			
Phone		FAX	
E-mail			

Registration Fee

Participant / Category	Pre-Registration (by April 8, 2011)	On-site Registration (April 29-30)
Prof, Dr. and PhD.	[] KRW250,000	KRW300,000
Researcher and Student	[] KRW100,000	KRW50,000

* Cancellation will be assess KRW10,000 administrative fee and must be received in writing no latter than April 15, 2011.

Payment by Bank Transfer

Name of Bank	Hana Bank
Account Number	122-910246-94607
Account Holder	Lee, Kyung-Ah (Stem Cell Symposium)
Swift Code	HNBKRSSE
Address of Bank	234-27, Nonhyeon 2-dong, Gangnam-Gu, Seoul 135-101, Korea

* Pre-Registration Due: April 8, 2011

* Cancellation Due: April 15, 2011

Conference Venue

JW Marriott Hotel Seoul (5F, Grandball Room)

19-3 Banpo-dong, Seocho-gu, Seoul 137-040 Korea

- Phone : 82-2-6282-6262

- Korean: <http://www.jw-marriott.co.kr>

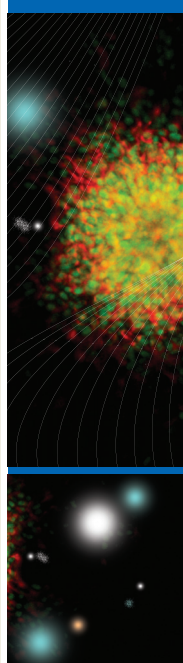
- English: <https://www.marriott.com/hotels/travel/seljw-jw-marriott-hotel-seoul>



Hotel Accommodations

We provide the special rate for conference participants.

Please check the web site (<http://www.chastemcell.com>) or contact Secretariat.



Institut Pasteur Korea (IP-K)

TEL 82-31-8018-8041 FAX 82-31-8018-8010
<http://www.ip-korea.org>

CHA Stem Cell Institute (CSCI), CHA University

TEL 82-2-557-3937 FAX 82-2-563-2028
<http://csci.cha.ac.kr/>

Secretariat

The 3rd International Collaborative Symposium on Stem Cell Research
TEL 82-2-716-8852 FAX 82-2-716-8851
2011stemcell@gmail.com
<http://www.chastemcell.com>